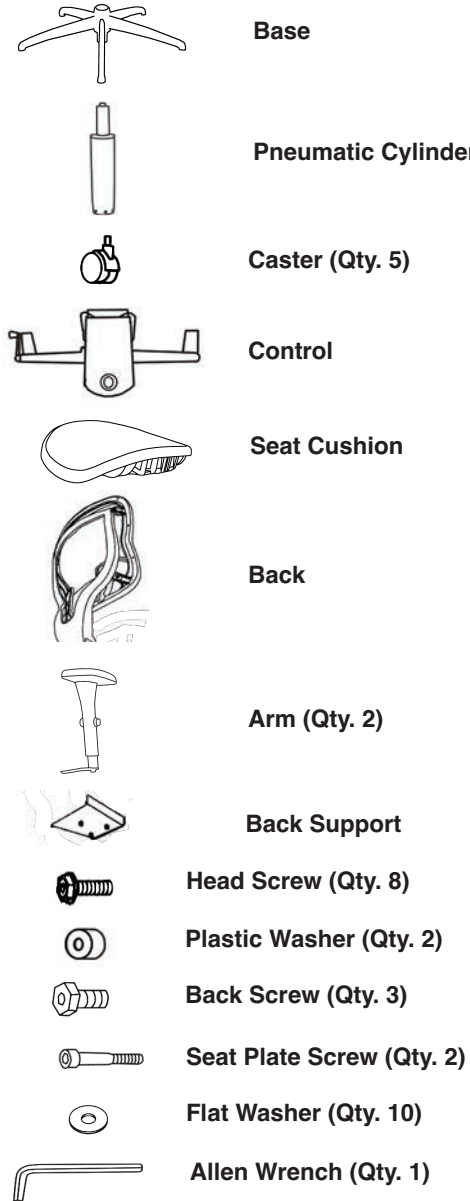


# RIKA MESH ASSEMBLY INSTRUCTIONS

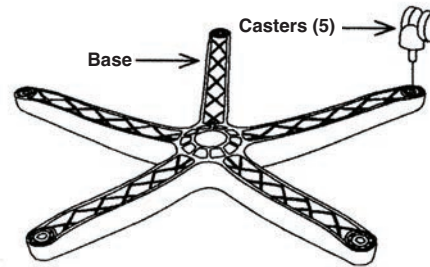
877-263-5737  
www.buzzseating.com

## IN THE BOX COMPONENTS



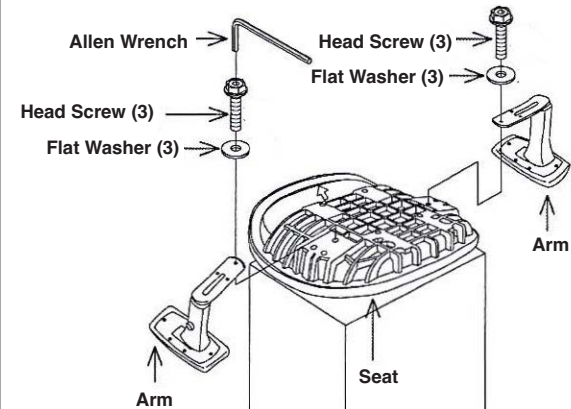
### STEP 1

Insert 5 casters into base, push hard until you feel or hear the caster snap into place.



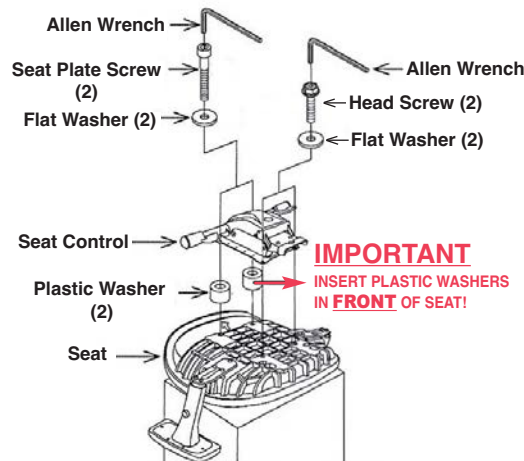
### STEP 2

Attach arms to seat cushion using 3 head screws and 3 flat washers for each arm. FULLY TIGHTEN SCREWS USING ALLEN WRENCH.



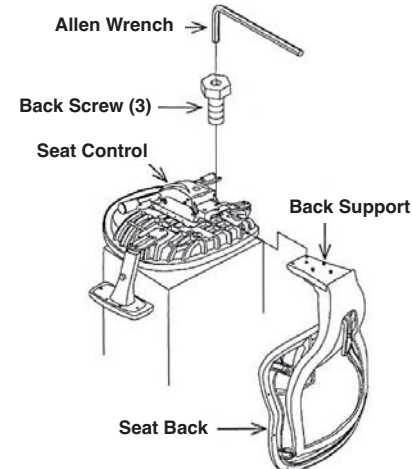
### STEP 3

Attach seat control to seat cushion using 2 seat plate screws, 2 flat washers and 2 plastic washers for the front and 2 head screws and 2 flat washers for the rear. FULLY TIGHTEN SCREWS USING ALLEN WRENCH.



### STEP 4

Attach back assembly to assembled seat by inserting back support into rear of seat plate, secure back support using 3 back screws. FULLY TIGHTEN SCREWS USING ALLEN WRENCH.



### STEP 5

Insert pneumatic cylinder into base, place assembled seat on top of pneumatic cylinder and apply downward pressure.

